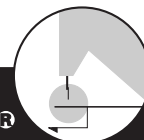


TEFLON FEET, TEFLON PAININJALAT

Attachments

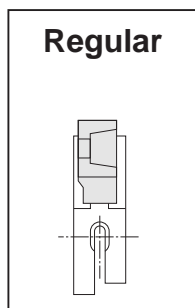


PIEDS TEFLON
PIES PRENSATELA DE TEFLON

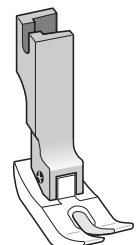
TEFLON-NÄHFÜSSE
特氟隆压脚

SUISEI®

ST350 Teflon Foot <Regular>



ST350



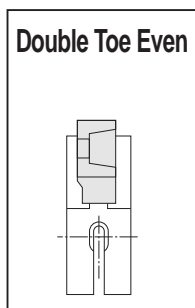
5.5mm ↓ 5.5mm

ST350B

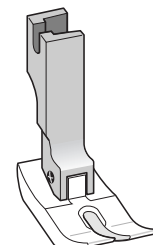


Teflon Shoe for "ST350"

ST35W Teflon Foot <Double Toe Even>

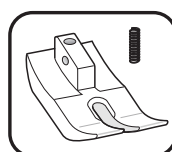


ST35W



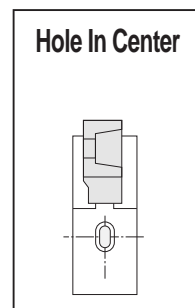
6.5mm ↓ 6.5mm

ST35WB

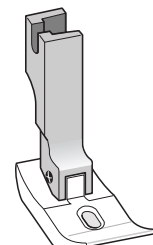


Teflon Shoe for "ST35W"

ST35CW Teflon Foot <Hole In Center>

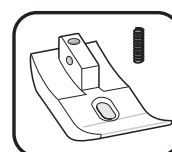


ST35CW



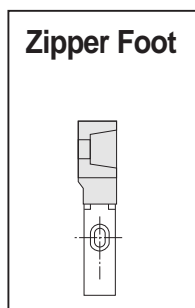
6.5mm ↓ 6.5mm

ST35CWB

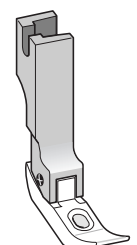


Teflon Shoe for "ST35CW"

ST363 Teflon Zipper Foot



ST363



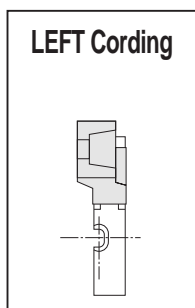
3mm ↓ 3mm

ST363B

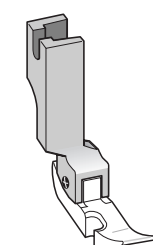


Teflon Shoe for "ST363"

ST36LN Teflon Cording Foot <Left>

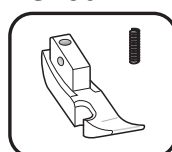


ST36LN



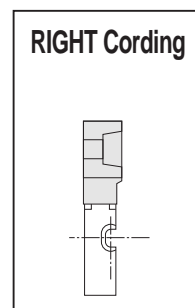
0.5mm ↓ 5.5mm

ST36LNB

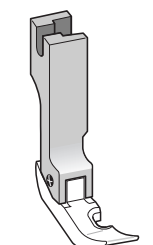


Teflon Shoe for "ST36LN"

ST36N Teflon Cording Foot <Right>

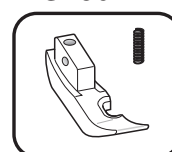


ST36N



5.5mm ↓ 0.5mm

ST36NB



Teflon Shoe for "ST36N"

B20, CPS07 Spring and Screw for New Teflon Feet JOOUSI JA RUUVI, IISIIN MALLEIHIN

B20



ø2.0 mm

- All new hinged feet, new compensating presser feet [SR..., SL...] type and teflon feet [ST...] type indicated parts number with under line have this spring.

CPS07



L=7.5 mm

- All new hinged feet and teflon feet indicated parts number with under line have this screw except compensating presser feet and adjustable shirring foot **S955**.

B30U, C06, C07, C1 Spring and Screws for Old Type VANHAT MALLIT

B30U



ø3.0mm

T36N, T36LN
T36, T36L
T35, T35W
T35C, T35CW
T350, T363

C06



L=6.0mm

T363

C07



L=7.0mm

T36N
T36LN

C1



L=10.0mm

T36, T36L
T35, T35W
T35C, T35CW
T350

• for Old Type Teflon Feet