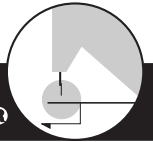


# STANDARD FEET, VAKIOJALAT

Attachments



PIEDS STANDARD

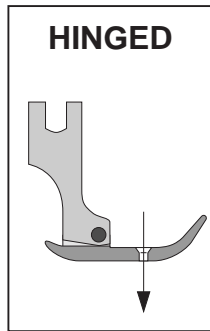
PIES PRENSATELA NORMALIZADAS

STANDARD NÄHFÜSSE

标准压脚

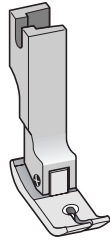
SUISEI®

## SP58N, SP351(K), S6565, SP127 Hinged Standard Feet NIVELVAKIOJALKA



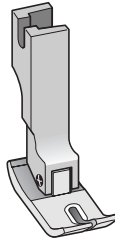
HINGED

(P58N)  
SP58N



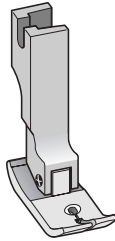
5 mm ↓ 4 mm

(P351)  
SP351



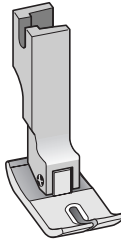
6 mm ↓ 5 mm

(P351K)  
SP351K



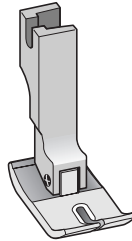
6 mm ↓ 5 mm

(P193)  
S6565



6.5 mm ↓ 6.5 mm

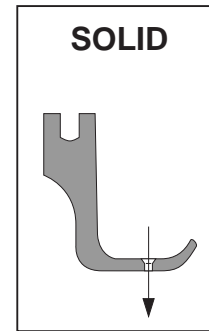
(P127)  
SP127



7.5 mm ↓ 7 mm

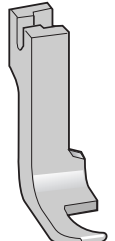
• P35 (6mm • 5mm) foot is discontinued.

## P983 Solid Half Foot KIINTEÄ VAKIOJALKA



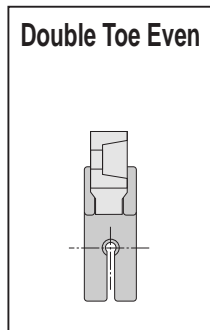
SOLID

P983



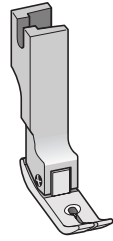
Standard

## S4040, S5050 Hinged Feet <Double Toe Even> NIVELJALKA



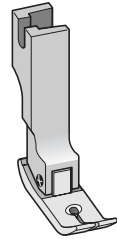
Double Toe Even

(P946)  
S4040



4 mm ↓ 4 mm

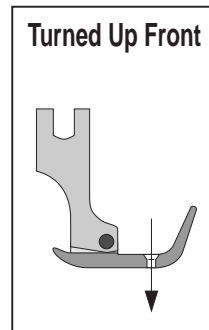
(P58W, P144HL)  
S5050



5 mm ↓ 5 mm

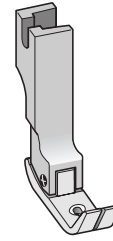
• P58W (4.5mm • 4.5mm) • P144H (5.5mm • 5.5mm)  $\xrightarrow{\text{modified}}$  S5050

## S4040V, S5050V, S6060V, SP352 Hinged Feet <Turned Up Front> NIVELJALKA



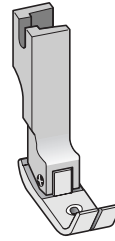
Turned Up Front

S4040V



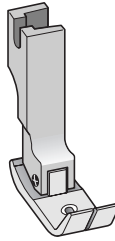
4 mm ↓ 4 mm

(P144HL)  
S5050V



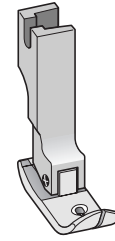
5 mm ↓ 5 mm

(P3613)  
S6060V



6 mm ↓ 6 mm

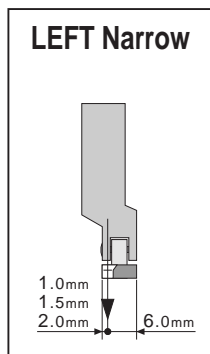
(P352)  
SP352



6.5 mm ↓ 4.5 mm

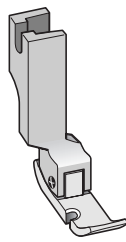
• P144HL (5.5mm • 5.5mm)  $\xrightarrow{\text{modified}}$  S4040V, S5050V and S6060V

## S1060, S1560, SP360 Hinged Feet <Left Narrow> NIVELJALKA, NEULA VASEN



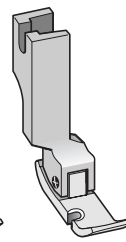
LEFT Narrow

S1060



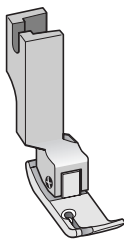
1 mm ↓ 6 mm

S1560



1.5 mm ↓ 6 mm

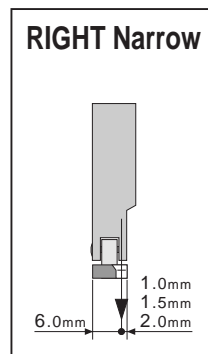
(P360)  
SP360



2 mm ↓ 6 mm

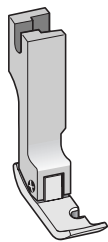
1.0mm  
1.5mm  
2.0mm

## S6010, S6015, SP361 Hinged Feet <Right Narrow> NIVELJALKA, NEULA OIKEA



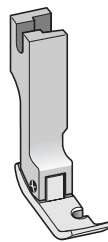
RIGHT Narrow

S6010



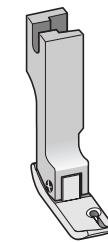
6 mm ↓ 1 mm

S6015



6 mm ↓ 1.5 mm

(P361)  
SP361



6 mm ↓ 2 mm

6.0mm  
1.0mm  
1.5mm  
2.0mm

## B20, CPS07 Spring and Screw for New Hinged Feet JOUSI JA RUUVI UUSILLE NIVELJALOILLE

B20



ø2.0 mm

• All new hinged feet, new compensating presser feet [SR..., SL...] type and new teflon feet [ST...] type indicated parts number with under line have this spring.

CPS07



L=7.5 mm

• All new hinged feet and teflon feet indicated parts number with under line have this screw except compensating presser feet and adjustable shirring foot S955.